



40 46 PALMERS ROAD LONDON, E2 0TB

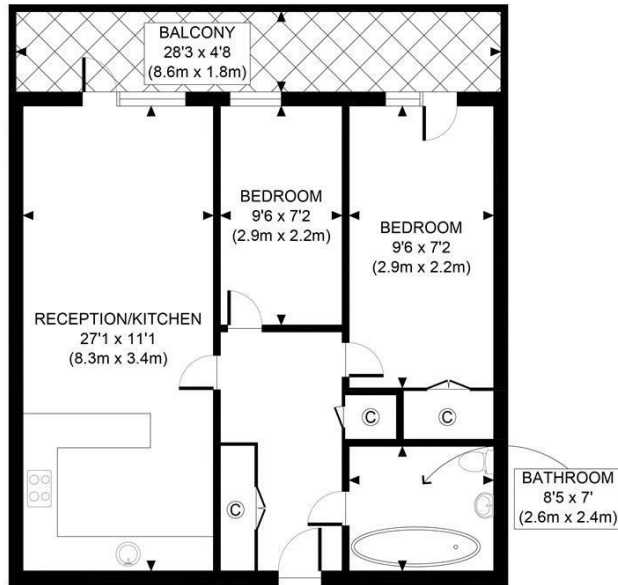
£500,000
LEASEHOLD

Set on the fifth floor of a modern development on the highly sought-after Palmers Road, this beautifully presented two-bedroom apartment offers contemporary living with stunning views across Canary Wharf.

The property features a bright and spacious semi-open plan kitchen and reception area, leading directly onto a generous private balcony—perfect for entertaining or relaxing while taking in the skyline. With floor-to-ceiling windows throughout, the apartment is flooded with natural light and finished to a high specification, including sleek integrated appliances and modern fixtures.

Both bedrooms are well-proportioned doubles, with the principal bedroom offering additional access to the balcony. Thoughtfully designed built-in storage

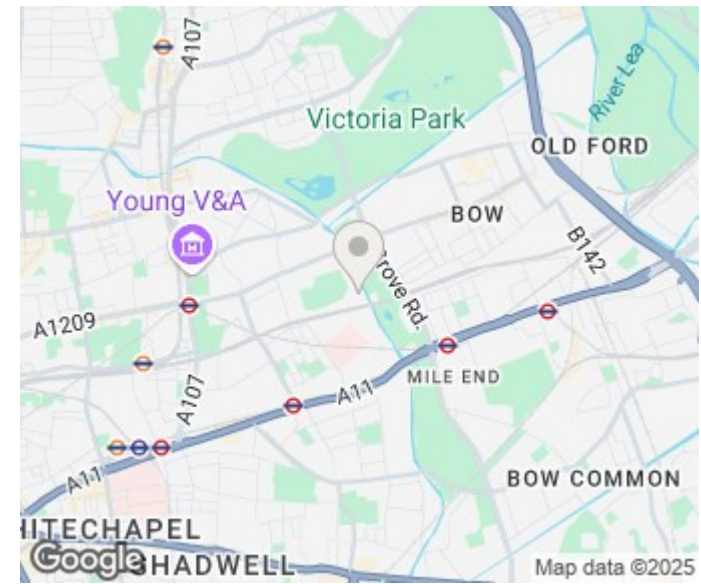
Hemmingfords



FIFTH FLOOR
GROSS INTERNAL
FLOOR AREA 743 SQ FT



APPROX. GROSS INTERNAL FLOOR AREA 743 SQ FT / 69 SQM	PALMERS ROAD
Disclaimer: Floor plan measurements are approximate and are for illustrative purposes only. While we do not doubt the floor plan accuracy and completeness, you or your advisors should conduct a careful, independent investigation of the property in respect of monetary valuation	date 22/05/25
	photoplan



Energy Efficiency Rating		Current	Potential
Very energy efficient - lower running costs			
(92 plus) A			
(81-91) B		85	85
(69-80) C			
(55-68) D			
(39-54) E			
(21-38) F			
(1-20) G			
Not energy efficient - higher running costs			
England & Wales		EU Directive 2002/91/EC	

Agents Note: Whilst every care has been taken to prepare these particulars, they are for guidance purposes only. All measurements are approximate and are for general guidance purposes only and whilst every care has been taken to ensure their accuracy, they should not be relied upon and potential buyers/tenants are advised to recheck the measurements

Hemmingfords Sales & Lettings
Second Floor
34 Upper Street
London
N1 0PN

02038907470
info@hemmingfords.co.uk
www.hemmingfords.co.uk

Hemmingfords